

Presenters:

Center for
Reaching & Teaching
the Whole Child

Nancy Lourié Markowitz, Ph.D.

Founder and Executive Director
Center for Reaching & Teaching the
Whole Child
Professor Emerita
San José State University

Heidi Stevenson, Ph.D.

Assistant Director
Center for Reaching & Teaching the
Whole Child
Associate Professor
University of the Pacific

Teaching with a Social, Emotional, and Cultural Lens



Copyright © 2020 Center for Reaching & Teaching the Whole Child (CRTWC). All Rights Reserved. This program may not be copied in whole or in part without the written consent of CRTWC.

1



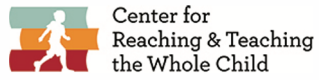
Center for
Reaching & Teaching
the Whole Child



- ❖ Mindful moment
- ❖ The need for a social, emotional, and cultural lens
- ❖ Introduction to CRTWC Social, Emotional, and Cultural Anchor Competencies Framework
- ❖ A look at the lens in practice
- ❖ Debrief
- ❖ Q/A

Copyright © 2020 Center for Reaching & Teaching the Whole Child (CRTWC). All Rights Reserved. This program may not be copied in whole or in part without the written consent of CRTWC.

2



Center for
Reaching & Teaching
the Whole Child



❖ Mindful moment

- ❖ The need for a social, emotional, and cultural lens
- ❖ Introduction to CRTWC Social, Emotional, and Cultural Anchor Competencies Framework
- ❖ A look at the lens in practice
- ❖ Debrief
- ❖ Q/A

Copyright © 2020 Center for Reaching & Teaching the Whole Child (CRTWC). All Rights Reserved. This program may not be copied in whole or in part without the written consent of CRTWC.

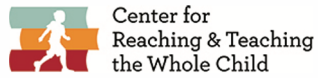
3

A Mindful Moment



Copyright © 2020 Center for Reaching & Teaching the Whole Child (CRTWC). All Rights Reserved. This program may not be copied in whole or in part without the written consent of CRTWC.

4



- ❖ Mindful moment
- ❖ **The need for a social, emotional, and cultural lens**
- ❖ Introduction to CRTWC Social, Emotional, and Cultural Anchor Competencies Framework
- ❖ A look at the lens in practice
- ❖ Debrief
- ❖ Q/A

Copyright © 2020 Center for Reaching & Teaching the Whole Child (CRTWC). All Rights Reserved. This program may not be copied in whole or in part without the written consent of CRTWC.

5

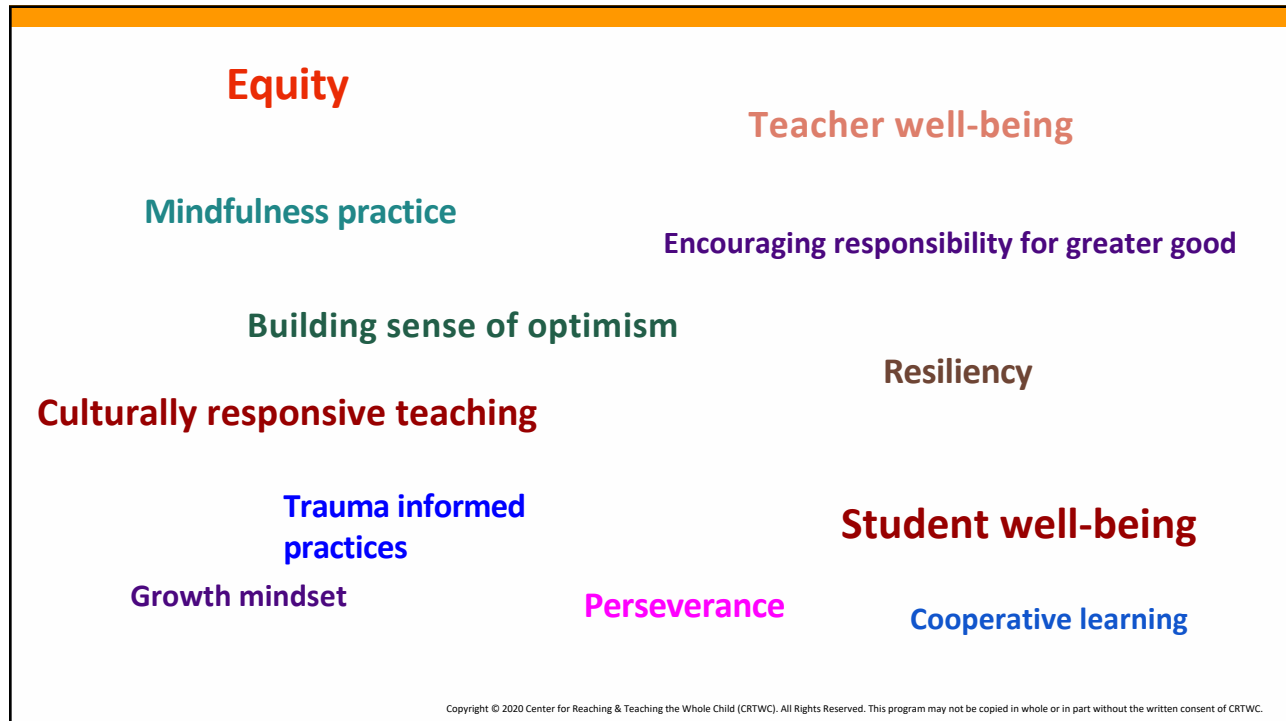
“Teachers make more minute by minute decisions than brain surgeons...and that is why you are going home exhausted each day.”

Dr. Tina Boogren



Copyright © 2020 Center for Reaching & Teaching the Whole Child (CRTWC). All Rights Reserved. This program may not be copied in whole or in part without the written consent of CRTWC.

6



7



8

Using the social, emotional, and cultural lens, teachers...

- teachers ask different questions about their students,
 - gather different kinds of data, and therefore;
 - respond to students more equitably.



Copyright © 2020 Center for Reaching & Teaching the Whole Child (CRTWC). All Rights Reserved. This program may not be copied in whole or in part without the written consent of CRTWC.

9



Center for
Reaching & Teaching
the Whole Child



- ❖ Mindful moment
- ❖ The need for a social, emotional, and cultural lens
- ❖ **Introduction to CRTWC Social, Emotional, and Cultural Anchor Competencies Framework**
- ❖ A look at the lens in practice
- ❖ Debrief
- ❖ Q/A

Copyright © 2020 Center for Reaching & Teaching the Whole Child (CRTWC). All Rights Reserved. This program may not be copied in whole or in part without the written consent of CRTWC.

10



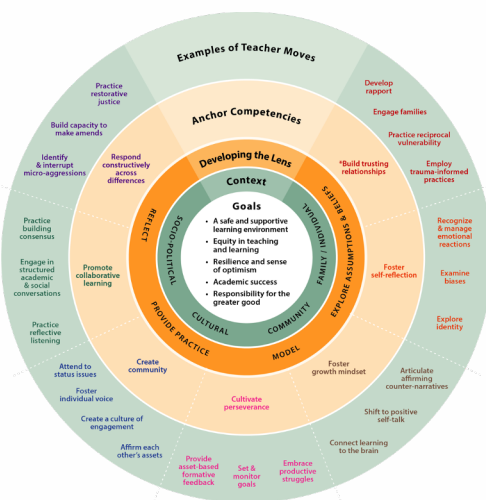
Anchor Competencies Framework

A roadmap to teaching with a social, emotional, and cultural lens

Copyright © 2020 Center for Reaching & Teaching the Whole Child (CRTWC). All Rights Reserved. This program may not be copied in whole or in part without the written consent of CRTWC.

11

Social, Emotional, Cultural Anchor Competencies Framework



Combined best practices and research in teaching and learning

Developed with educators


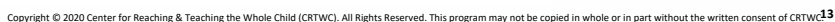
Respected educator's knowledge of their students

Intended to be foundational to academic achievement

Provided a common language and roadmap to integrate SEL and CRT in the service of equity

Copyright © 2020 Center for Reaching & Teaching the Whole Child (CRTWC). All Rights Reserved. This program may not be copied in whole or in part without the written consent of CRTWC.

12



Center for
Reaching & Teaching
the Whole Child



7

Goals

- A safe and supportive learning environment
- Equity in teaching and learning
- Resilience and sense of optimism
- Academic success
- Responsibility for the greater good

Copyright © 2020 Center for Reaching & Teaching the Whole Child (CRTWC). All Rights Reserved. This program may not be copied in whole or in part without the written consent of CRTWC.

15

Context (teacher and student)

- > Family/Individual
- > Community
- > Cultural
- > Socio-political

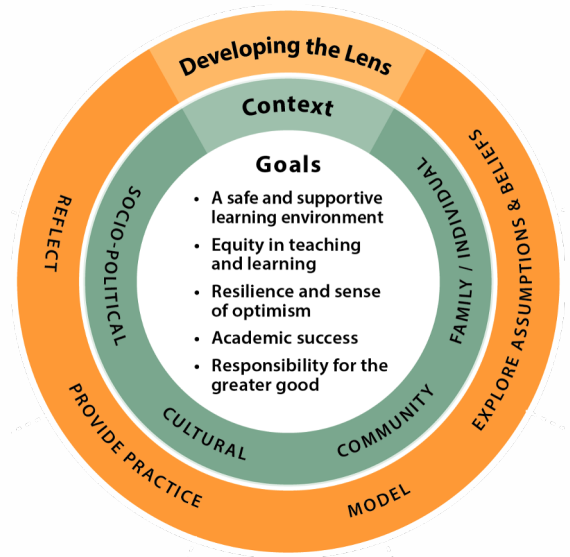


Copyright © 2020 Center for Reaching & Teaching the Whole Child (CRTWC). All Rights Reserved. This program may not be copied in whole or in part without the written consent of CRTWC.

16

To develop the lens...

- > Explore assumptions/beliefs
- > Provide modeling
- > Practice
- > Reflect



Copyright © 2020 Center for Reaching & Teaching the Whole Child (CRTWC). All Rights Reserved. This program may not be copied in whole or in part without the written consent of CRTWC.

17

Anchor Competencies

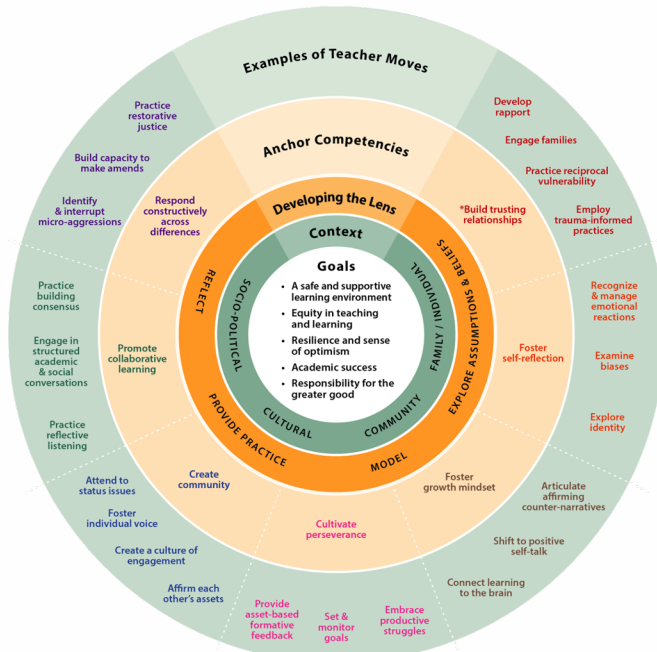
- ⚓ Build trusting relationships
- ⚓ Foster self-reflection
- ⚓ Foster growth mindset
- ⚓ Cultivate perseverance
- ⚓ Create community
- ⚓ Promote collaborative learning
- ⚓ Respond constructively across differences



Copyright © 2020 Center for Reaching & Teaching the Whole Child (CRTWC). All Rights Reserved. This program may not be copied in whole or in part without the written consent of CRTWC.

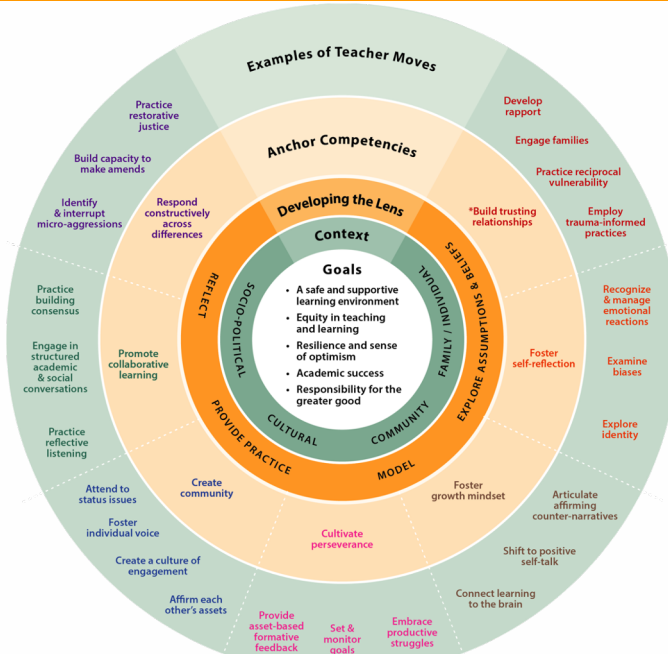
18

Examples of Teacher Moves



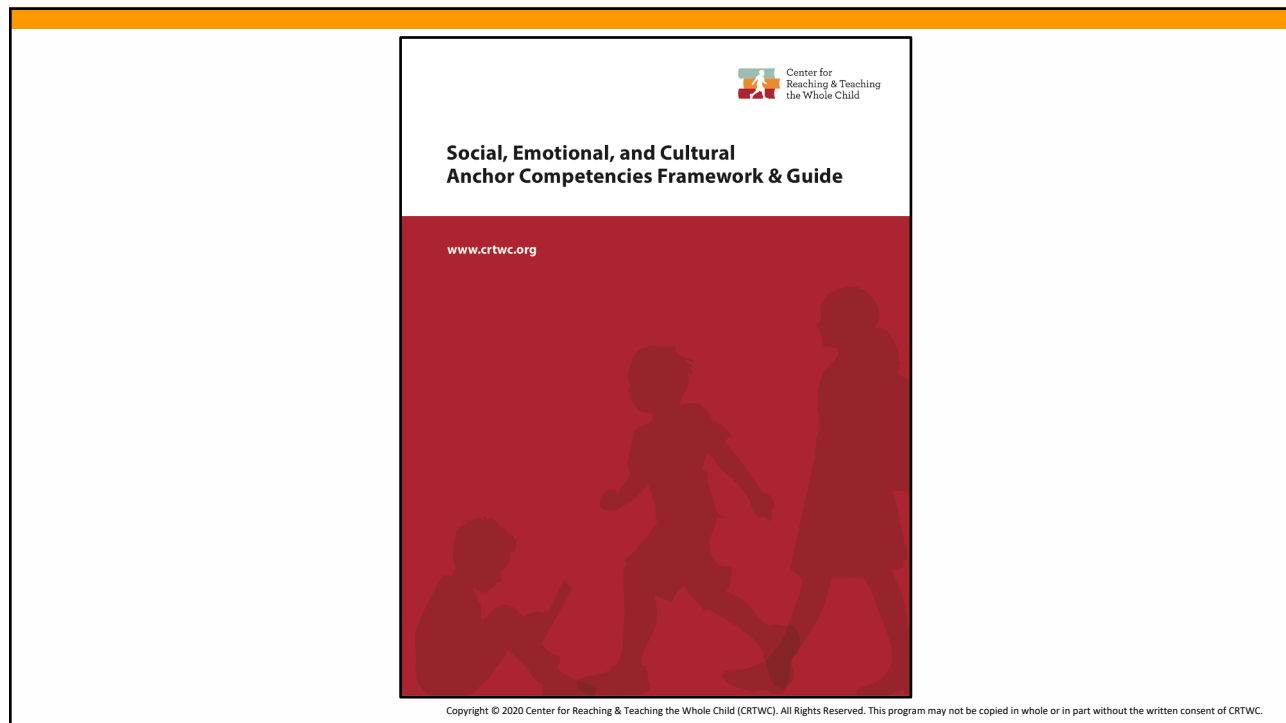
Copyright © 2020 Center for Reaching & Teaching the Whole Child (CRTWC). All Rights Reserved. This program may not be copied in whole or in part without the written consent of CRTWC.

19

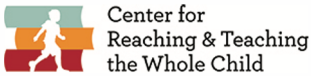



Copyright © 2020 Center for Reaching & Teaching the Whole Child (CRTWC). All Rights Reserved. This program may not be copied in whole or in part without the written consent of CRTWC.

20



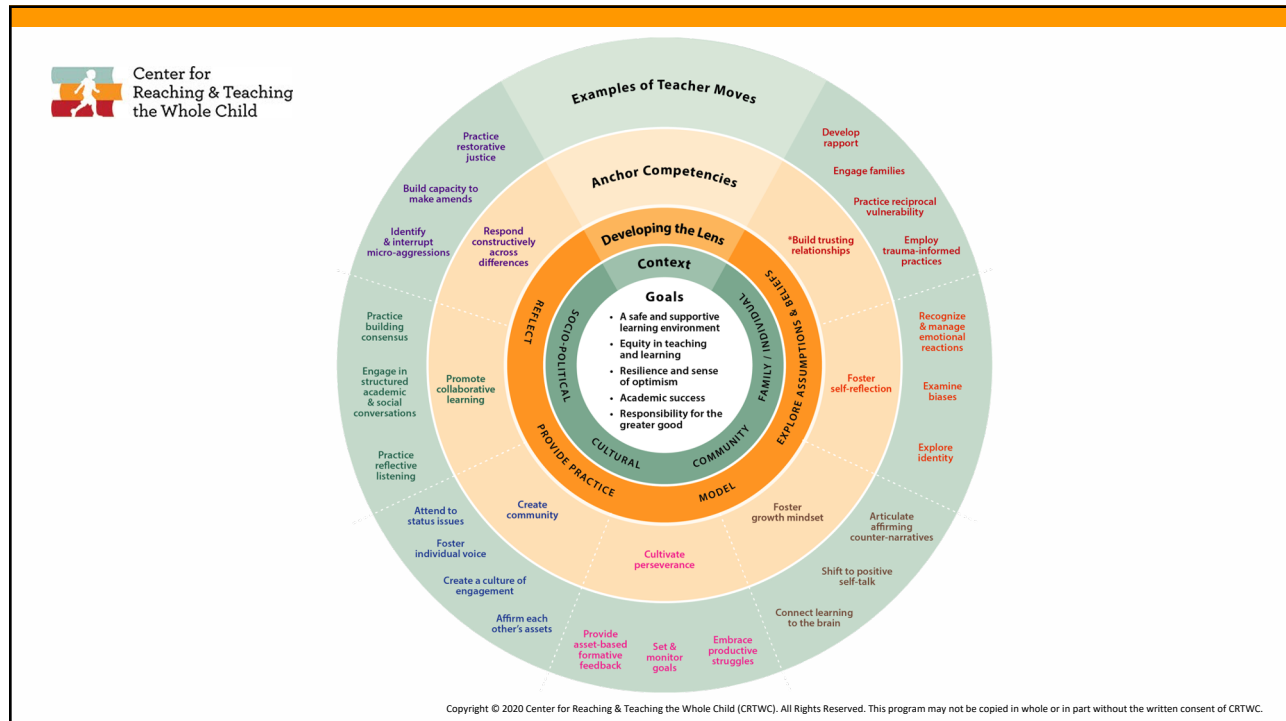
21

- ❖ Mindful moment
- ❖ The need for a social, emotional, and cultural lens
- ❖ Introduction to CRTWC Social, Emotional, and Cultural Anchor Competencies Framework
- ❖ **A look at the lens in practice**
- ❖ Debrief
- ❖ Q/A

Copyright © 2020 Center for Reaching & Teaching the Whole Child (CRTWC). All Rights Reserved. This program may not be copied in whole or in part without the written consent of CRTWC.

22



23

Anchor Competencies in Action - Video

<https://youtu.be/PTQObSaUJmM>

Copyright © 2020 Center for Reaching & Teaching the Whole Child (CRTWC). All Rights Reserved. This program may not be copied in whole or in part without the written consent of CRTWC.

24



Center for
Reaching & Teaching
the Whole Child



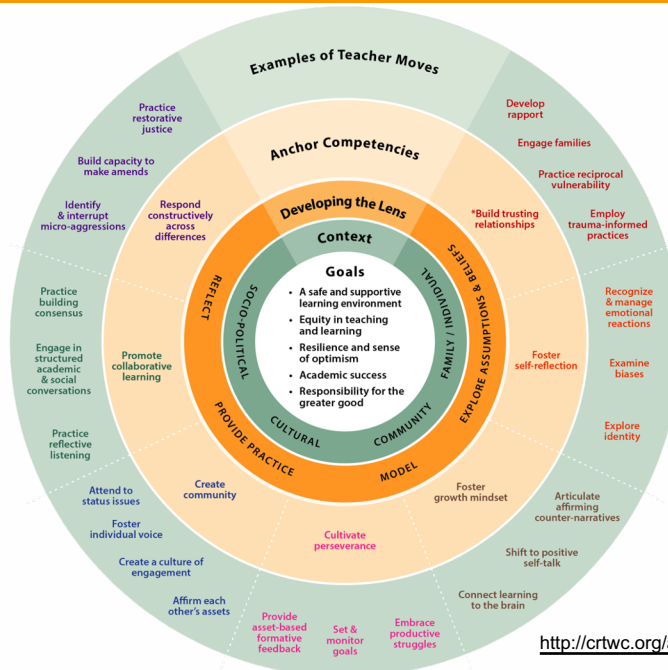
- ❖ Mindful moment
- ❖ The need for a social, emotional, and cultural lens
- ❖ Introduction to CRTWC Social, Emotional, and Cultural Anchor Competencies Framework
- ❖ A look at the lens in practice
- ❖ **Debrief**
- ❖ Q/A

Copyright © 2020 Center for Reaching & Teaching the Whole Child (CRTWC). All Rights Reserved. This program may not be copied in whole or in part without the written consent of CRTWC.

25



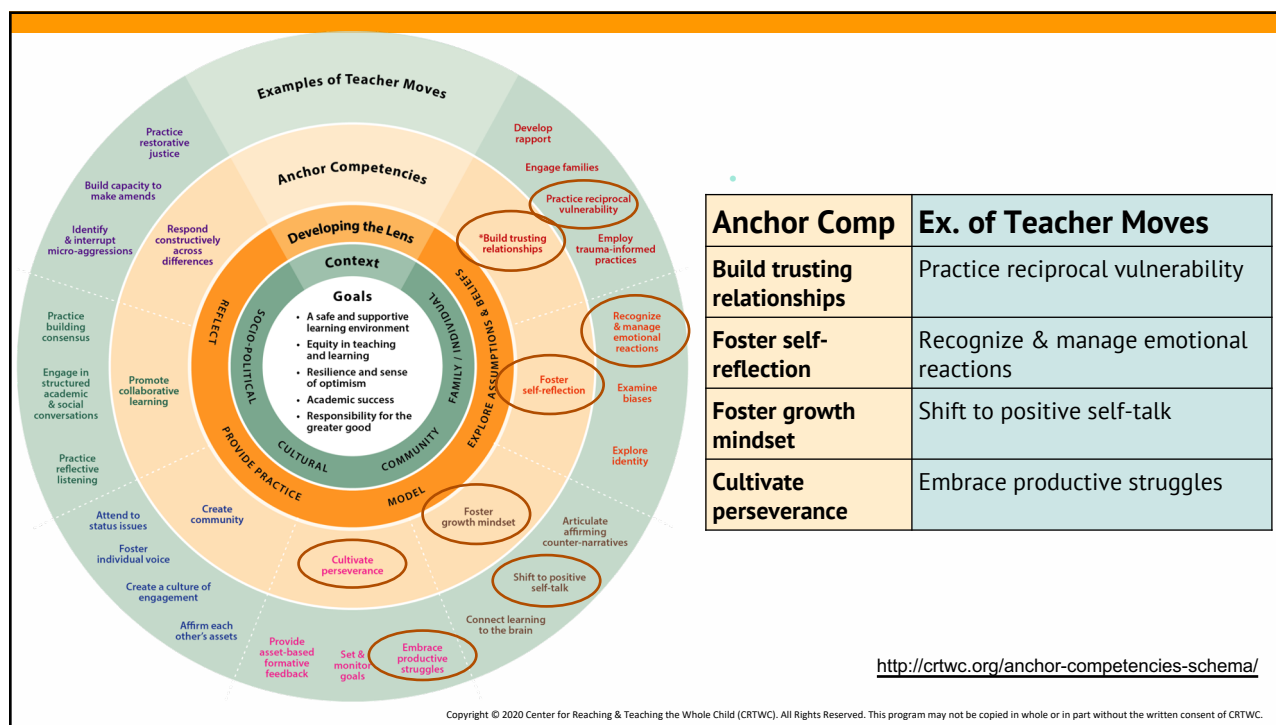
Center for
Reaching & Teaching
the Whole Child



<http://crtwc.org/anchor-competencies-schema/>

Copyright © 2020 Center for Reaching & Teaching the Whole Child (CRTWC). All Rights Reserved. This program may not be copied in whole or in part without the written consent of CRTWC.

26



27

CRTWC Professional Development Opportunities 2020-2021

Teacher Educator Institute

- 2 virtual retreats
- 4 Zoom conferences



Institute for School Site & District Teacher Coaches

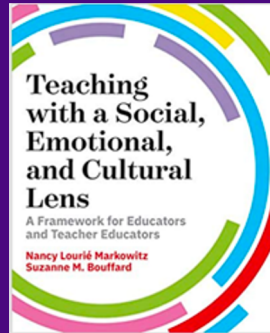
- 2 virtual retreats
- 5 Zoom conferences



Copyright © 2020 Center for Reaching & Teaching the Whole Child (CRTWC). All Rights Reserved. This program may not be copied in whole or in part without the written consent of CRTWC.

28

Spreading the word....



Stay connected by signing up on our website (www.crtwc.org) to learn about upcoming **Teacher Educator Institutes** and **Institutes for Teacher Coaches** and follow us on Twitter and Facebook @reachteachchild

Copyright © 2020 Center for Reaching & Teaching the Whole Child (CRTWC). All Rights Reserved. This program may not be copied in whole or in part without the written consent of CRTWC.

29



Center for
Reaching & Teaching
the Whole Child



- ❖ Mindful moment
- ❖ The need for a social, emotional, and cultural lens
- ❖ Introduction to CRTWC Social, Emotional, and Cultural Anchor Competencies Framework
- ❖ A look at the lens in practice
- ❖ Debrief
- ❖ Q/A

Copyright © 2020 Center for Reaching & Teaching the Whole Child (CRTWC). All Rights Reserved. This program may not be copied in whole or in part without the written consent of CRTWC.

30



Copyright © 2020 Center for Reaching & Teaching the Whole Child (CRTWC). All Rights Reserved. This program may not be copied in whole or in part without the written consent of CRTWC.

31

Contact Information

www.crtwc.org

Nancy Markowitz, Ph.D.
Founder and Executive Director
nancy.crtwc@gmail.com

Heidi Stevenson, Ph.D.
Assistant Director
heidi.crtwc@gmail.com

Copyright © 2020 Center for Reaching & Teaching the Whole Child (CRTWC). All Rights Reserved. This program may not be copied in whole or in part without the written consent of CRTWC.

32